

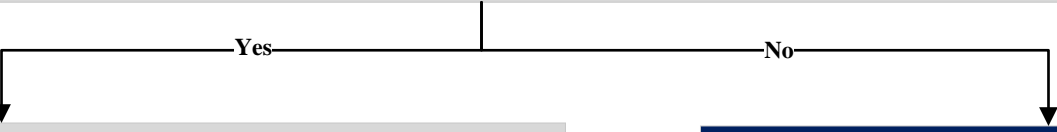
Child Care P-EBT Eligibility Flowchart

Child Care Pandemic EBT (P-EBT) is a food assistance program for households that receive Food and Nutrition Services (FNS) and have children 5 years old and younger to help purchase food during the COVID-19 pandemic.

There is no application for P-EBT. P-EBT eligibility will be determined each month based on the child's age and status of the FNS case. If the child is no longer included in an active FNS case, P-EBT benefits will end with the last month of FNS.

Follow the chart below to see if your child is eligible for P-EBT benefits for any given month between September 2021 and May 2022.

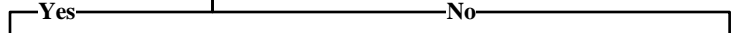
Is your child 5 years old or younger as of September 1, 2021?



Does your child belong to a household with an active FNS case?

Your child is **not eligible** for Child Care P-EBT because they are over the age of 6.

IMPORTANT:
If your child is a pre-K-12 student, eligibility rules of Student P-EBT will apply to them. Your child will not receive Child Care P-EBT.
Click [HERE](#) to view the Student P-EBT eligibility chart.



Your child is **not eligible** for Child Care P-EBT because they are not included in an active FNS case.

How can I apply for FNS?

Apply online with ePASS.

Or

Apply in person at your county Department of Social Services (DSS) office.

Or

Fill out a paper application and mail to/drop off at your county DSS office.

Your child is **eligible** for Child Care P-EBT.

IMPORTANT:
If your household applies for FNS and receives approval, children 5 years old and younger in that household will receive Child Care P-EBT **from the month of case opening** through the end of the school year if the case remains active.
Benefits will **not be** issued back to the beginning of the school year for new FNS cases.

IMPORTANT:
Eligibility will be checked for **each benefit month**.